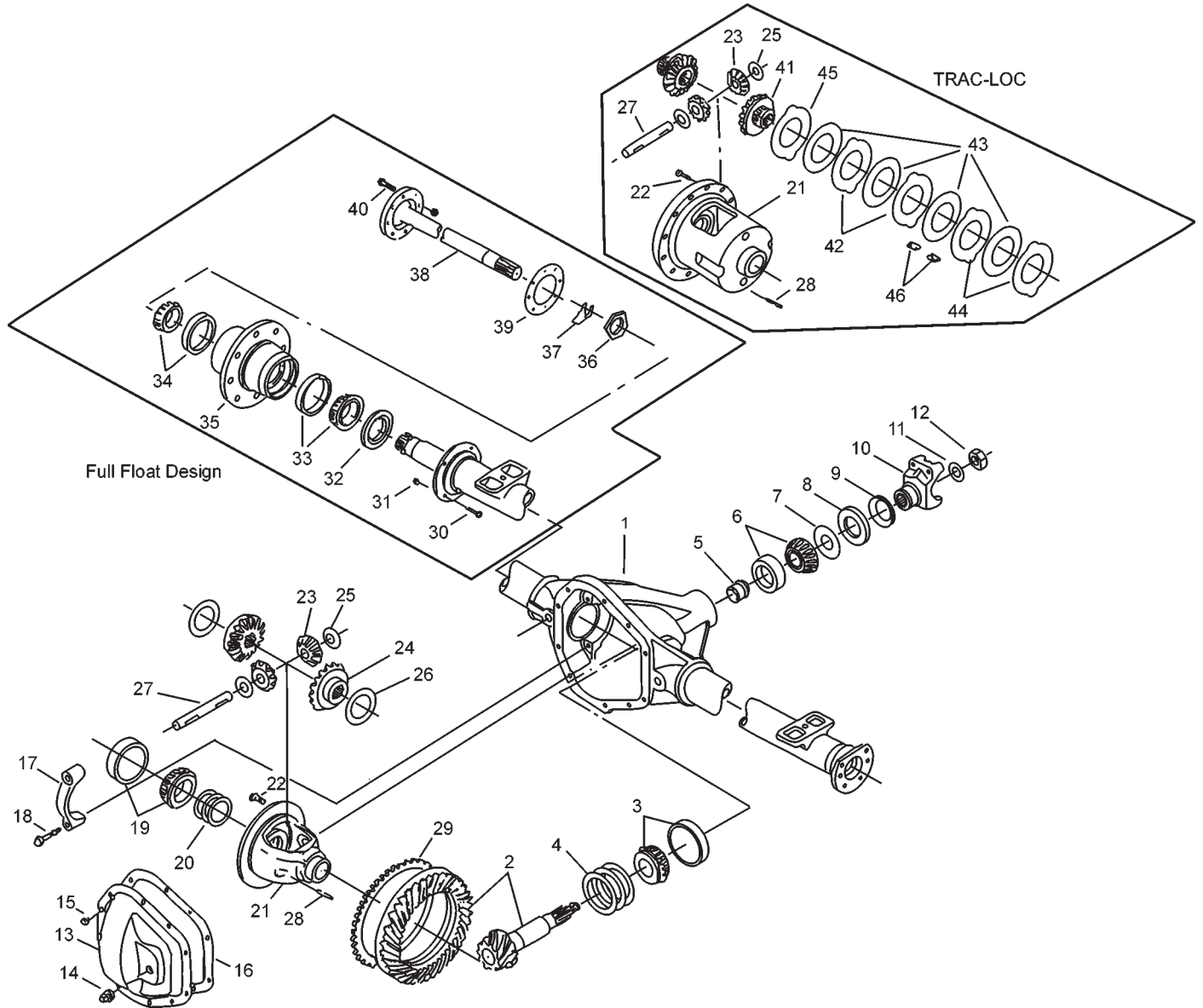


Dodge / Chrysler 1994-1998 1/2

**Model 60 /248 Rear
Axles for**

D2500, W2500 Ram

Dodge Model 60 /248 Rear Axles - Ram Exploded View



Dodge Model 60 /248 Rear Axles - Ram

Parts Listing



ITEM NO.	PART NUMBER	DESCRIPTION	ITEM NO.	PART NUMBER	DESCRIPTION
1	— ⁽³⁾	Housing – Axle Service	23	34367	Pinion – Differential
2	— ⁽¹⁾	Drive Pinion & Gear Assembly	24	34394	Gear – Differential (std)
3	706046X	KIT – Inner Pinion Bearing	25	34730	Thrustwasher – Differential Pinion
4	701126X	PKG – Inner Pinion Shim	26	34729	Thrustwasher – Differential Gear (std)
5	45658	Collapsible Spacer	27	30263	Shaft – Differential
6	706045X	KIT – Outer Pinion Bearing	28	44810	Lock – Differential Shaft
7	42737	Thrustwasher	29	42928	Tone Ring (ABS)
8	42449	Seal – Pinion Oil	30	— ⁽³⁾	Bolt – Brake Mounting
9	34592	Slinger – End Yoke	31	— ⁽³⁾	Nut – Brake Mounting
10	3-4-11891-1X	End Yoke Assembly (inc 9)	32	47507	Seal – Hub
11	44167	Washer – Pinion Nut	33	— ⁽³⁾	KIT – Inner Wheel Bearing
12	30271	Pinion Nut	34	— ⁽³⁾	KIT – Outer Wheel Bearing
	— ⁽²⁾	KIT – Carrier Cover	35	— ⁽³⁾	Wheel Hub
		(inc items 13, 14, 15)	36	— ⁽²⁾	Spindle Nut
13	— ⁽⁴⁾	Carrier Cover	37	46545	Locking Wedge
14	43180	Plug – Carrier Cover	38	— ⁽¹⁾	Shaft – Axle Flanged Drive
15	34822	Bolt – Carrier Cover (qty 10)	39	39697	Gasket
16	34687	Gasket – Carrier Cover	40	— ⁽³⁾	Cap Screw
	38615	RTV Silicone Sealant	41	35803	Gear – Differential (t/l)
17	— ⁽³⁾	Differential Bearing Cap		707083X	KIT – Disc & Plate (t/l)
18	48632-1	Bolt – Differential Bearing Cap	42	— ⁽⁴⁾	Plate – Differential Pressure
19	706047X	KIT – Differential Bearing	43	— ⁽⁴⁾	Disc – Differential
20	708012	PKG – Differential Brg Shim (inc 16)	44	— ⁽⁴⁾	Plate – Diff (selective thickness)
21	— ⁽¹⁾	Case – Differential	45	— ⁽⁴⁾	Plate – Preload Spacer
22	40638	Bolt – Drive Gear (qty 12)	46	40835	Clip – Differential Clutch Retainer

- (1) See "Bill of Material Table" on next page
- (2) See "Variable Parts Table" below
- (3) Contact Vehicle Manufacturer
- (4) Not Sold Separately

Variable Parts Listing

Kits & Parts - Use With All Applications							
Description & Item Number (Refer to "Exploded View" on previous page)			Bills of Material				
			605585	605586 605633	605634	605784 605793	605794
1	KIT – Carrier Cover	-	707354X	707353X	707354X	707353X	707354X
2	Spindle Nut	36	39695	39695	39695	47163	47163
			605898	605899	605907	605908	605978
1	KIT – Carrier Cover	-	707353X	707354X	707353X	707354X	707353X
2	Spindle Nut	36	47163	47163	47163	47163	47163
			605979	605987	605988 606054 606062		
1	KIT – Carrier Cover	-	707354X	707353X	707354X		
2	Nut – Spindle	36	47163	47163	47163		

Dodge Model 60 /248 Rear Axles - Ram

Bill of Material Table

Axle			Axle Kits				Shaft & Joint Assy.	
Bill of Material	Diff. Type	Ratio	Ring Gear & Pinion Kit ⁽⁷⁾	Differential			Right Hand Shaft Assy.	Left Hand Shaft Assy.
				Case Assy. Kit ⁽⁸⁾	Case Kit	Inner Parts Kit		
1994-95 1/2 D2500								
605585-1	Standard	4.10	708009-2	708010	708011	706043X	43965-4	43965-4
605585-2	Trac Lok	4.10	708009-2	708013	708014	707084X	43965-4	43965-4
605585-5	Standard	3.55	708009-1	708010	708011	706043X	43965-4	43965-4
605585-6	Trac Lok	3.55	708009-1	708013	708014	707084X	43965-4	43965-4
605585-7	Standard	3.55	708009-1	708010	708011	706043X	43965-4	43965-4
605585-8	Trac Lok	4.10	708009-2	708013	708014	707084X	43965-4	43965-4
605633-1	Standard	3.55	708009-1	708010	708011	706043X	43965-4	43965-4
605633-2	Trac Lok	3.55	708009-1	708013	708014	707084X	43965-4	43965-4
605633-3	Standard	4.10	708009-2	708010	708011	706043X	43965-4	43965-4
605633-4	Trac Lok	4.10	708009-2	708013	708014	707084X	43965-4	43965-4
605633-5	Standard	3.55	708009-1	708010	708011	706043X	43965-4	43965-4
605633-6	Trac Lok	4.10	708009-2	708013	708014	707084X	43965-4	43965-4
1994-95 1/2 W2500								
605586-1	Standard	3.55	708009-1	708010	708011	706043X	43965-4	43965-4
605586-2	Trac Lok	3.55	708009-1	708013	708014	707084X	43965-4	43965-4
605586-3	Standard	4.10	708009-2	708010	708011	706043X	43965-4	43965-4
605586-4	Trac Lok	4.10	708009-2	708013	708014	707084X	43965-4	43965-4
605586-7	Standard	3.55	708009-1	708010	708011	706043X	43965-4	43965-4
605586-8	Trac Lok	4.10	708009-2	708013	708014	707084X	43965-4	43965-4
605634-1	Standard	3.55	708009-1	708010	708011	706043X	43965-4	43965-4
605634-2	Trac Lok	3.55	708009-1	708013	708014	707084X	43965-4	43965-4
605634-3	Standard	4.10	708009-2	708010	708011	706043X	43965-4	43965-4
605634-4	Trac Lok	4.10	708009-2	708013	708014	707084X	43965-4	43965-4
605634-5	Standard	3.55	708009-1	708010	708011	706043X	43965-4	43965-4
605634-6	Trac Lok	4.10	708009-2	708013	708014	707084X	43965-4	43965-4
1996 W2500								
605899-1	Standard	3.55	708009-1	707120X	707121X	706043X	43965-4	43965-4
605899-2	Trac Lok	4.10	708009-2	707090X	707123X	707084X	43965-4	43965-4
1996-96 1/2 D2500								
605784-1	Standard	3.55	708009-1	708010	708011	706043X	43965-4	43965-4
605784-2	Trac Lok	4.10	708009-2	708013	708014	707084X	43965-4	43965-4
605793-1	Standard	3.55	708009-1	708010	708011	706043X	43965-4	43965-4
605793-2	Trac Lok	4.10	708009-2	708013	708014	707084X	43965-4	43965-4
1996 1/2 W2500								
605794-1	Standard	3.55	708009-1	708010	708011	706043X	43965-4	43965-4
605794-2	Trac Lok	4.10	708009-2	708013	708014	707084X	43965-4	43965-4
1997-97 1/2 D2500								
605898-1	Standard	3.55	708009-1	708010	708011	706043X	43965-4	43965-4
605898-2	Trac Lok	4.10	708009-2	708013	708014	707084X	43965-4	43965-4
605907-1	Standard	3.55	708009-1	708010	708011	706043X	43965-4	43965-4
605907-2	Trac Lok	4.10	708009-2	708013	708014	707084X	43965-4	43965-4
1997-97 1/2 W2500								
605908-1	Standard	3.55	708009-1	708010	708011	706043X	43965-4	43965-4
605908-2	Trac Lok	4.10	708009-2	708013	708014	707084X	43965-4	43965-4

(7) See Ring Gear & Pinion Kits in XGI Catalog for ratio & tooth combinations.

(8) See Differential Case Assy Kits in XGI Catalog for spline data & ratios.

Dodge Model 60 /248 Rear Axles - Ram

Bill of Material Table

Axle			Axle Kits				Shaft & Joint Assy.	
Bill of Material	Diff. Type	Ratio	Ring Gear & Pinion Kit ⁽⁷⁾	Differential			Right Hand Shaft Assy.	Left Hand Shaft Assy.
				Case Assy. Kit ⁽⁸⁾	Case Kit	Inner Parts Kit		
1997 1/2 W2500								
606054-1	Standard	3.55	708009-1	708010	708011	706043X	43965-4	43965-4
606054-2	Trac Lok	4.10	708009-2	708013	708014	707084X	43965-4	43965-4
1998 W2500								
605979-1	Standard	3.55	708009-1	707120X	707121X	706043X	43965-4	43965-4
605979-2	Trac Lok	4.10	708009-2	707090X	707123X	707084X	43965-4	43965-4
1998-98 1/2 D2500								
605978-1	Standard	3.55	708009-1	708010	708011	706043X	43965-4	43965-4
605978-2	Trac Lok	4.10	708009-2	708013	708014	707084X	43965-4	43965-4
605987-1	Standard	3.55	708009-1	708010	708011	706043X	43965-4	43965-4
605987-2	Trac Lok	4.10	708009-2	708013	708014	707084X	43965-4	43965-4
1998-98 1/2 W2500								
605988-1	Standard	3.55	708009-1	708010	708011	706043X	43965-4	43965-4
605988-2	Trac Lok	4.10	708009-2	708013	708014	707084X	43965-4	43965-4
606062-1	Standard	3.55	708009-1	708010	708011	706043X	43965-4	43965-4
606062-2	Trac Lok	4.10	708009-2	708013	708014	707084X	43965-4	43965-4

(7) See Ring Gear & Pinion Kits in XGI Catalog for ratio & tooth combinations.

(8) See Differential Case Assy Kits in XGI Catalog for spline data & ratios.