

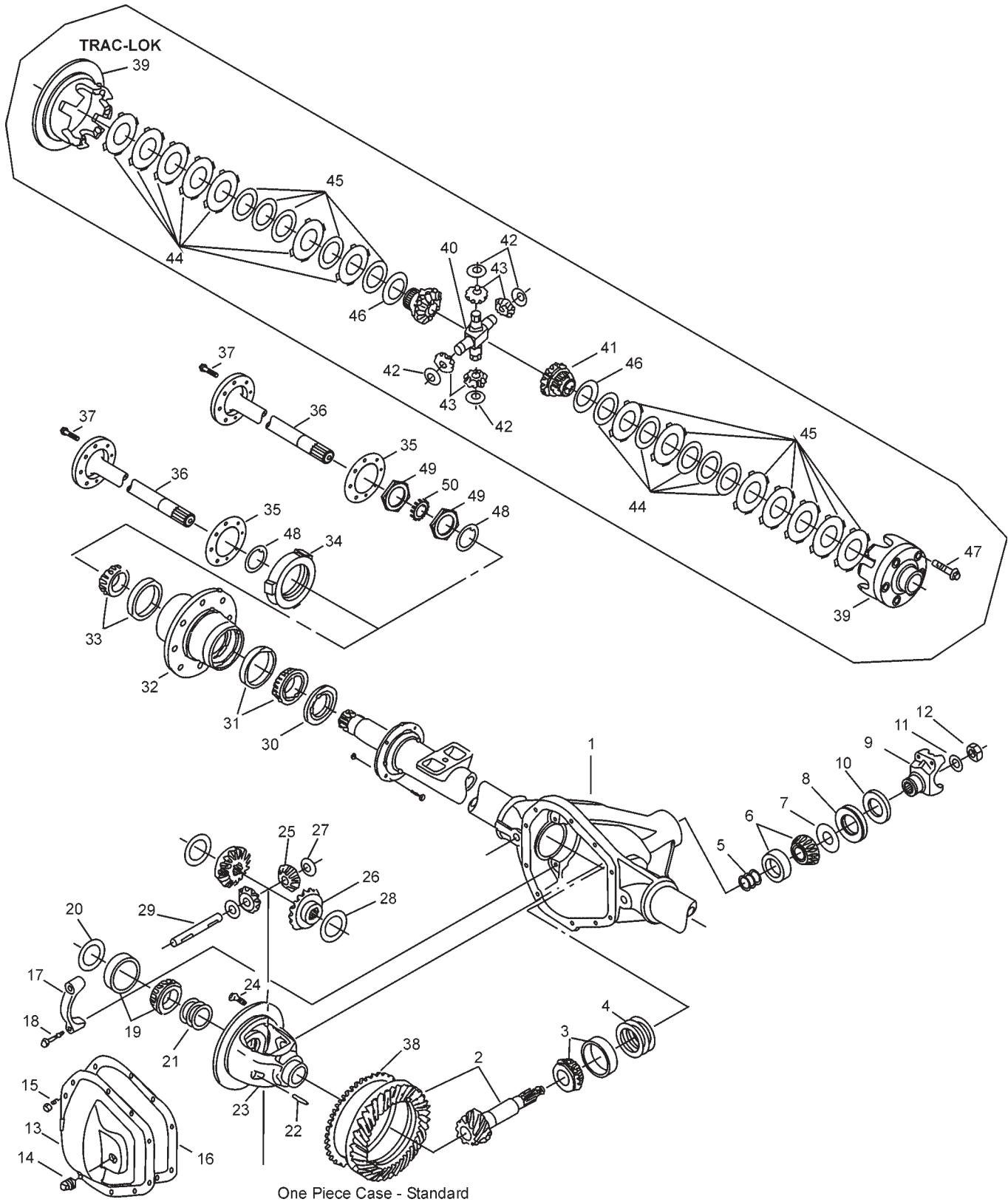
Ford 1988-1998

Model 80 /286 Rear Axles for

E-350

F-350, F-450

Ford Model 80 /286 Rear Axles Exploded View



Ford Model 80 /286 Rear Axles Parts Listing

ITEM NO.	PART NUMBER	DESCRIPTION	ITEM NO.	PART NUMBER	DESCRIPTION
1	— ⁽³⁾	Housing – Axle Service	25	42413	Pinion – Differential (std)
2	— ⁽¹⁾	Drive Pinion & Gear Assembly	26	— ⁽²⁾	Gear – Differential (std)
3	— ⁽²⁾	KIT – Inner Pinion Bearing	27	35082	Thrustwasher – Diff Pinion (std)
	— ⁽²⁾	PKG – Pinion Bearing Shim (inc items 4, 5, 11, 12)	28	34729	Thrustwasher – Diff Gear (std)
	— ⁽²⁾	PKG – Diff & Pinion Bearing Shim (inc items 4, 5, 11, 12, 20)	29	46640	Shaft – Differential (std)
			30	— ⁽²⁾	Oil Seal (Inner Wheel)
4	— ⁽⁴⁾	Inner Pinion Bearing Shims	31	— ⁽²⁾	Bearing Cone – Inner Wheel
5	— ⁽⁴⁾	Outer Pinion Bearing Shims	32	— ⁽³⁾	Bearing Cup – Inner Wheel
6	707064X	KIT – Outer Pinion Bearing	33	— ⁽²⁾	Hub & Rotor Assembly
7	42430	Thrustwasher – Bearing		— ⁽³⁾	Bearing Cone – Outer Wheel
8	46411	Seal – Pinion Oil	34	— ⁽²⁾	Bearing Cup – Outer Wheel
9	— ⁽²⁾	End Yoke Assembly (inc 10)		— ⁽²⁾	Retainer – Wheel Bearing (RH)
10	— ⁽²⁾	Slinger – End Yoke	35	— ⁽²⁾	Retainer – Wheel Bearing (LH)
11	37104	Washer – Pinion Nut	36	— ⁽¹⁾	Gasket
12	37082	Pinion Nut	37	— ⁽²⁾	Shaft – Axle
	— ⁽²⁾	KIT – Carrier Cover (inc items 13, 14, 15)	38	42414	Screw & Lockwasher Assembly
			39	— ⁽⁴⁾	Tone Ring (ABS)
13	— ⁽²⁾	Carrier Cover	40	— ⁽²⁾	Case – Differential (t/l)
14	— ⁽²⁾	Plug – Carrier Cover	41	— ⁽²⁾	Shaft – Differential (t/l)
15	— ⁽²⁾	Bolt – Carrier Cover (qty 10)	42	— ⁽²⁾	Gear – Differential (t/l)
16	38615	RTV Silicone Sealant	43	— ⁽²⁾	Thrustwasher – Pinion (t/l)
17	— ⁽³⁾	Differential Bearing Cap		— ⁽²⁾	Pinion – Differential (t/l)
18	48632-1	Bolt – Differential Bearing Cap	44	— ⁽⁴⁾	KIT – Disc & Plate (t/l)
19	706070X	KIT – Differential Bearing	45	— ⁽⁴⁾	Disc – Differential Clutch
20	— ⁽²⁾	KIT – Differential Outboard Spacer	46	— ⁽⁴⁾	Plate – Differential Pressure
21	— ⁽²⁾	PKG – Differential Bearing Shim	47	— ⁽²⁾	Disc – Differential Dished
22	47024	Lock – Differential Shaft	48	— ⁽²⁾	Bolt – Differential Case (t/l)
23	— ⁽⁴⁾	Case – Differential (std)	49	— ⁽²⁾	Retainer Ring / O-Ring
24	42433	Bolt – Drive Gear (qty 12)	50	— ⁽²⁾	Spindle Nut
					Lockwasher – Spindle Nut

- (1) See "Bill of Material Table" on next page
(2) See "Variable Parts Table" within this section
(3) Contact Vehicle Manufacturer
(4) Not Sold Separately

Ford Model 80 /286 Rear Axles

Bill of Material Table

Axle			Axle Kits				Shaft & Joint Assy.	
Bill of Material	Diff. Type	Ratio	Ring Gear & Pinion Kit ⁽⁷⁾	Differential			Right Hand Shaft Assy.	Left Hand Shaft Assy.
				Case Assy. Kit ⁽⁸⁾	Case Kit	Inner Parts Kit		
1988 F-350 Super Duty								
605303-1	Standard	4.63	707060-1X	707061X	707062X	707063X	43286-1	43286-1
605303-2	Standard	5.13	707060-4X	707061X	707062X	707063X	43286-1	43286-1
605303-3	Standard	4.63	707060-1X	707061X	707062X	707063X	43286-1	43286-1
605303-4	Standard	5.13	707060-4X	707061X	707062X	707063X	43286-1	43286-1
1989 F-350 Super Duty								
605400-1	Standard	4.63	707060-1X	707061X	707062X	707063X	43286-1	43286-1
605400-2	Standard	5.13	707060-4X	707061X	707062X	707063X	43286-1	43286-1
1990-91 1/2 F-350 Super Duty								
605445-1	Standard	4.63	707060-1X	707184X	707062X	707185X	43651-1	43651-1
605445-2	Standard	5.13	707060-4X	707184X	707062X	707185X	43651-1	43651-1
1992-93 1/2 F-450 Chassis-DRW-Full Float								
605461-1	Standard	4.63	707060-1X	707232X	707230X	707185X	43651-1	43651-1
605461-2	Standard	5.13	707060-4X	707232X	707230X	707185X	43651-1	43651-1
1993-94 1/2 F-450 Chassis-DRW-Full Float								
605632-1	Standard	4.63	707060-1X	707232X	707230X	707185X	43651-1	43651-1
605632-2	Standard	5.13	707060-4X	707232X	707230X	707185X	43651-1	43651-1
1995-95 1/2 F-450 Chassis-DRW-Full Float								
605717-1	Standard	4.63	707060-12X	707232X	707230X	707185X	43651-1	43651-1
605717-2	Standard	5.13	707060-13X	707232X	707230X	707185X	43651-1	43651-1
1996 E-350 DRW Chassis - Full Float								
605834-1	Standard	4.63	707361-5X	707330X	707230X	707063X	46930-1	46930-2
1996-98 F-450 Chassis-DRW-Full Float								
605831-1	Standard	4.63	707361-5X	707394X	707395X	707185X	43651-1	43651-1
605831-2	Standard	5.13	707361-6X	707394X	707395X	707185X	43651-1	43651-1
605831-4	Trac Lok	5.13	707361-6X	708097	— ⁽³⁾	— ⁽³⁾	43651-1	43651-1
1997-98 E-350 DRW Chassis - Full Float								
605807-1	Standard	4.63	707361-5X	707330X	707230X	707063X	46930-1	46930-2
1998 1/2 E-350 Super Duty - DRW - Full Float								
606076-1	Standard	4.10	707361-11X	707330X	707230X	707063X	46930-1	46930-2
1998 1/2-99 1/2 F-350 Chassis DRW Full Float ABS								
605924-1	Standard	3.73	708120-5	707330X	707230X	707063X	47847-3	47847-4
605924-2	Trac Lok	4.10	708120-6	707477X	708053	708051	47847-3	47847-4
605924-3	Trac Lok	4.30	708120-7	707477X	708053	708051	47847-3	47847-4
605942-1	Trac Lok	4.10	708120-6	707477X	708053	708051	47847-1	47847-2
1998 1/2-99 1/2 F-450 Chassis-DRW-Full Float								
605925-1	Standard	4.88	708120-10	707394X	707395X	707185X	47852-1	47852-1
605925-2	Trac Lok	4.88	708120-10	708097	— ⁽³⁾	— ⁽³⁾	47852-1	47852-1
605925-3	Standard	5.38	708120-11	707394X	707395X	707185X	47852-1	47852-1
605925-4	Trac Lok	5.38	708120-11	708097	— ⁽³⁾	— ⁽³⁾	47852-1	47852-1
1998 1/2-2000 F-350 Pick-Up DRW-Full Float								
605926-1	Standard	3.73	708120-5	707330X	707230X	707063X	47847-1	47847-2
605926-2	Trac Lok	4.10	708120-6	707477X	708053	708051	47847-1	47847-2
605926-3	Trac Lok	4.30	708120-7	707477X	708053	708051	47847-1	47847-2

(3) Contact vehicle manufacturer

(7) See Ring Gear & Pinion Kits in XGI Catalog for ratio & tooth combinations.

(8) See Differential Case Assy Kits in XGI Catalog for spline data & ratios.

Ford Model 80 /286 Rear Axles Variable Parts Listing

Kits & Parts - Use With All Applications							
Description & Item Number (Refer to "Exploded View" at the front of this section)			Bills of Material				
			605303	605400 605445	605461	605632	605717
1	KIT – Inner Pinion Bearing	3	707065X	707065X	707065X	707065X	707065X
2	PKG – Pinion Bearing Shim	-	707066X	707066X	707066X	707066X	707066X
3	PKG – Diff & Pinion Bearing Shim	-	708036	708036	708036	708036	708036
4	End Yoke Assembly (inc 10)	9	3-4-11081-1X	3-4-11081-1X	3-4-11081-1X	3-4-11081-1X	3-4-11081-1X
5	Slinger – End Yoke	10	42432	42432	42432	42432	42432
6	KIT – Carrier Cover	-	707070X	707070X	707231X	707231X	707231X
7	Carrier Cover	13	42434	42434	42434	42434	42434
8	Plug – Carrier Cover	14	36472	36472	38637	38637	38637
9	Bolt – Carrier Cover (qty 10)	15	34822	34822	34822	34822	34822
10	KIT – Differential Outboard Spacer	20	707069X ⁽⁹⁾	707069X ⁽⁹⁾	707069X ⁽⁹⁾	707069X ⁽⁹⁾	707069X ⁽⁹⁾
11	PKG – Differential Bearing Shim	21	708035	708035	708035	708035	708035
12	Gear – Differential (std)	26	42411	43652	43652	43652	43652
13	Oil Seal (Inner Wheel)	30	42446	42446	44303	44303	44303
14	Bearing Cone – Inner Wheel	31	566025	566025	566025	565962	565962
15	Bearing Cone – Outer Wheel	33	565907	565907	565907	566057	566057
16	Retainer – Wheel Bearing (RH)	34	43075	43075	—	—	46471
17	Retainer – Wheel Bearing (LH)	-	43076	43076	—	—	46471
18	Gasket	35	42445	42445	45817	45817	42445
19	Screw & Lockwasher Assembly	37	42447	42447	45816	45816	45816
20	Shaft – Differential (t/l)	40	—	—	—	—	—
21	Gear – Differential (t/l)	41	—	—	—	—	—
22	Thrustwasher – Pinion (t/l)	42	—	—	—	—	—
23	Pinion – Differential (t/l)	43	—	—	—	—	—
24	KIT – Disc & Plate (t/l)	-	—	—	—	—	—
25	Bolt – Differential Case (t/l)	47	—	—	—	—	—
26	Retainer Ring / O-Ring	48	—	—	36637	36637	—
27	Spindle Nut	49	—	—	36635	36635	—
28	Lockwasher – Spindle Nut	50	—	—	36636	36636	—

(See next page for additional bills of material)

- (9) 701133X & 707069X contain bearing preload spacers which can be purchased separately. See Differential Bearing Adjustment Shim Table, at the back of the Ford section of this catalog, for thickness applications. The bearing cone spacer (44849) can be purchased separately in kit 701152X.

Ford Model 80 /286 Rear Axles Variable Parts Listing

Kits & Parts - Use With All Applications							
Description & Item Number (Refer to "Exploded View" at the front of this section)			Bills of Material				
			605807	605831	605834	605924	605925
1	KIT – Inner Pinion Bearing	3	707065X	707065X	707065X	707447X	707447X
2	PKG – Pinion Bearing Shim	-	707066X	707066X	707066X	707480X	707480X
3	PKG – Diff & Pinion Bearing Shim	-	707365X	707365X	707365X	707481X	707481X
4	End Yoke Assembly (inc 10)	9	75725X	3-4-11081-1X	75725X	3-4-11081-1X	3-4-11281-1X
5	Slinger – End Yoke	10	42432	42432	42432	231872	231872
6	KIT – Carrier Cover	-	707231X	707231X	707231X	707479X	707478X
7	Carrier Cover	13	42434	42434	42434	47717-1	47843
8	Plug – Carrier Cover	14	38637	38637	38637	38637	38637
9	Bolt – Carrier Cover (qty 10)	15	34822	34822	34822	34822	47508
10	KIT – Differential Outboard Spacer	20	701133X ⁽⁹⁾	701133X ⁽⁹⁾	701133X ⁽⁹⁾	701133X ⁽⁹⁾	701133X ⁽⁹⁾
11	PKG – Differential Bearing Shim	21	707364X	707364X	707364X	707364X	707364X
12	Gear – Differential (std)	26	42411	43652	42411	42411	43652
13	Oil Seal (Inner Wheel)	30	47507	44303	47507	47507	47860
14	Bearing Cone – Inner Wheel	31	565906	565962	565906	565906	566071
15	Bearing Cone – Outer Wheel	33	565911	566057	565911	565911	550348
16	Retainer – Wheel Bearing (RH)	34	43075	46471	43075	43075	47858
17	Retainer – Wheel Bearing (LH)	-	43075	46471	43075	43075	47858
18	Gasket	35	39697	42445	39697	—	—
19	Screw & Lockwasher Assembly	37	45720	45816	45720	45816	45816
20	Shaft – Differential (t/l)	40	—	—	—	47802	—
21	Gear – Differential (t/l)	41	—	—	—	47796	—
22	Thrustwasher – Pinion (t/l)	42	—	—	—	47800	—
23	Pinion – Differential (t/l)	43	—	—	—	47798	—
24	KIT – Disc & Plate (t/l)	-	—	—	—	702009	—
25	Bolt – Differential Case (t/l)	47	—	—	—	41610-1	—
26	Retainer Ring / O-Ring	48	—	—	—	47893	47857
27	Spindle Nut	49	—	—	—	—	—
28	Lockwasher – Spindle Nut	50	—	—	—	—	—

(See next page for additional bills of material)

(9) 701133X & 707069X contain bearing preload spacers which can be purchased separately. See Differential Bearing Adjustment Shim Table, at the back of the Ford section of this catalog, for thickness applications. The bearing cone spacer (44849) can be purchased separately in kit 701152X.

Ford Model 80 /286 Rear Axles Variable Parts Listing

Kits & Parts - Use With All Applications							
Description & Item Number (Refer to "Exploded View" at the front of this section)			Bills of Material				
			605926	605942	605944	606076	
1	KIT – Inner Pinion Bearing	3	707447X	707447X	707447X	707065X	
2	PKG – Pinion Bearing Shim	-	707480X	707480X	707480X	707066X	
3	PKG – Diff & Pinion Bearing Shim	-	707481X	707481X	707481X	707365X	
4	End Yoke Assembly (inc 10)	9	3-4-11081-1X	3-4-11081-1X	3-4-11281-1X	75725X	
5	Slinger – End Yoke	10	231872	231872	231872	42432	
6	KIT – Carrier Cover	-	707479X	707479X	707478X	707231X	
7	Carrier Cover	13	47717-1	47717-1	47843	42434	
8	Plug – Carrier Cover	14	38637	38637	38637	38637	
9	Bolt – Carrier Cover (qty 10)	15	34822	34822	34822	34822	
10	KIT – Differential Outboard Spacer	20	701133X ⁽⁹⁾	701133X ⁽⁹⁾	701133X ⁽⁹⁾	701133X ⁽⁹⁾	
11	PKG – Differential Bearing Shim	21	707364X	707364X	707364X	707364X	
12	Gear – Differential (std)	26	42411	—	43652	42411	
13	Oil Seal (Inner Wheel)	30	47507	47507	47860	47507	
14	Bearing Cone – Inner Wheel	31	565906	565906	566071	565906	
15	Bearing Cone – Outer Wheel	33	565911	565911	550348-1	565911	
16	Retainer – Wheel Bearing (RH)	34	43075	43075	47858	43075	
17	Retainer – Wheel Bearing (LH)	-	43075	43075	47858	43075	
18	Gasket	35	—	—	—	39697	
19	Screw & Lockwasher Assembly	37	45816	45816	45816	45720	
20	Shaft – Differential (t/l)	40	47802	47802	—	—	
21	Gear – Differential (t/l)	41	47796	47796	—	—	
22	Thrustwasher – Pinion (t/l)	42	47800	47800	—	—	
23	Pinion – Differential (t/l)	43	47798	47798	—	—	
24	KIT – Disc & Plate (t/l)	-	702009	702009	—	—	
25	Bolt – Differential Case (t/l)	47	41610-1	41610-1	—	—	
26	Retainer Ring / O-Ring	48	47893	47893	47857	—	
27	Spindle Nut	49	—	—	—	—	
28	Lockwasher – Spindle Nut	50	—	—	—	—	

- (9) 701133X & 707069X contain bearing preload spacers which can be purchased separately. See Differential Bearing Adjustment Shim Table, at the back of the Ford section of this catalog, for thickness applications. The bearing cone spacer (44849) can be purchased separately in kit 701152X.

Ford Optional Camber/Caster Bushing Chart

Ford 28 IFS Front Optional Camber/Caster Bushing Chart (round)

CASTER			CAMBER			Part Number	Color
Amount of Caster Correction	Right Side	Left Side	Amount of Camber Correction	Right Side	Left Side		
0° 00'	none	none	0 00'	none	none	40218	none
0° 00'	none	none	1 00'	positive (1) negative (2)	positive (1) negative (2)	42981	
1° 00'	positive	do not use	1 00'	positive (1) negative (2)	do not use	43182	

(1) Arrow out

(2) Arrow in

Ford 28 IFS and 35 IFS Front Optional Camber/Caster Bushing Chart (hexagonal)

Amount of Caster Correction	Right Side	Left Side	Amount of Camber Correction	Part Number	Color
0° 00'	none	none	0 00'	43918	Black
0° 00'	none	none	0 30'	43592	Green
0° 00'	none	none	1 00'	43919	Red
0° 00'	none	none	1 30'	43920	Blue

No Arrows

Ford 44 IFS and 50 IFS Front Optional Camber/Caster Bushing Chart

CASTER			CAMBER			Part Number	Color
Amount of Caster Correction	Right Side	Left Side	Amount of Camber Correction	Right Side	Left Side		
0° 00'	none	none	0 30'	none	none	42229	none
0° 00'	none	none	1 00'	none	none	43149	Red
0° 00'	none	none	1 30'	none	none	43579	Blue
0° 30'			0 54'	positive (1) negative (2)	positive (1) negative (2)	46580	Black
0° 30'			1 24'	positive (1) negative (2)	positive (1) negative (2)	46579	Yellow

(1) Arrow out

(2) Arrow in

Ford 50 and 60 Front Optional Camber/Caster Bushing Chart

Amount of Caster Correction	Right Side	Left Side	Amount of Camber Correction	Part Number	Color
0° 00'	none	none	0 00'	44507	Black
0° 30'	positive	negative	0 00'	44508	Red
0° 30'	negative	positive	0 00'	44509	Blue
0° 45'	positive	none	0 00'	44510	Green
0° 45'	negative	positive	0 00'	44511	Yellow
0° 00'	positive	negative	0 30'	50421	Pink
0° 30'	negative	positive	0 30'	50422	Orange

No Arrows

Notes: The camber can be used for both positive and negative applications, unless otherwise noted. For negative camber, point the arrow on the camber adjuster inboard. OPT is for optional bushing.

Ford Differential Bearing Adjustment Shims



Model 60 Rear & 70 Rear

Part Number	Nominal		Manufacturing Limits	
	MM	Inch	MM	Inch
47560-241	2.41	0.095	2.400/2.423	0.0945/0.0954
47560-254	2.54	0.100	2.527/2.550	0.0995/0.1004
47560-267	2.67	0.105	2.654/2.677	0.1045/0.1054
47560-279	2.79	0.110	2.791/2.804	0.1095/0.1104
47560-292	2.92	0.115	2.908/2.931	0.1145/0.1154
47560-305	3.05	0.120	3.035/3.058	0.1195/0.1204
47560-318	3.18	0.125	3.162/3.185	0.1245/0.1254
47560-330	3.30	0.130	3.289/3.312	0.1295/0.1304
47560-343	3.43	0.135	3.416/3.439	0.1345/0.1354
47560-356	3.56	0.140	3.543/3.566	0.1395/0.1404
47560-368	3.68	0.145	3.670/3.693	0.1445/0.1454
47560-381	3.81	0.150	3.797/3.820	0.1495/0.1504
47560-394	3.94	0.155	3.924/3.947	0.1545/0.1554
47560-406	4.06	0.160	4.051/4.074	0.1595/0.1604
47560-419	4.19	0.165	4.178/4.201	0.1645/0.1654
47560-432	4.32	0.170	4.305/4.328	0.1695/0.1704
47560-445	4.45	0.175	4.432/4.455	0.1745/0.1754
47560-457	4.57	0.180	4.559/4.582	0.1795/0.1804

Model 70 Rear

Part Number	Nominal		Manufacturing Limits	
	MM	Inch	MM	Inch
48849-457	4.57	0.180	4.559/4.582	0.1795/0.1804
48849-470	4.70	0.185	4.686/4.709	0.1845/0.1854
48849-483	4.83	0.190	4.813/4.836	0.1895/0.1904
48849-495	4.95	0.195	4.940/4.963	0.1945/0.1954
48849-508	5.08	0.200	5.067/5.090	0.1995/0.2004
48849-521	5.21	0.205	5.194/5.217	0.2045/0.2054
48849-533	5.33	0.210	5.321/5.344	0.2095/0.2104
48849-546	5.46	0.215	5.448/5.471	0.2145/0.2154
48849-559	5.59	0.220	5.575/5.598	0.2195/0.2204
48849-572	5.72	0.225	5.702/5.725	0.2245/0.2254
48849-584	5.84	0.230	5.829/5.852	0.2295/0.2304
48849-597	5.97	0.235	5.956/5.979	0.2345/0.2354
48849-610	6.10	0.240	6.083/6.106	0.2395/0.2404
48849-622	6.22	0.245	6.210/6.233	0.2445/0.2454
48849-635	6.35	0.250	6.237/6.360	0.2495/0.2504
48849-648	6.48	0.255	6.464/6.487	0.2545/0.2554

Model 80 Rear

Part Number	Nominal		Manufacturing Limits	
	MM	Inch	MM	Inch
44848-1	4.61	0.181	4.623/4.597	0.1820/0.1810
44848-2	4.65	0.183	4.661/4.636	0.1835/0.1825
44848-3	4.69	0.185	4.699/4.674	0.1850/0.1840
44848-4	4.72	0.186	4.737/4.712	0.1865/0.1855
44848-5	4.76	0.188	4.775/4.750	0.1880/0.1870
44848-6	4.80	0.189	4.813/4.788	0.1895/0.1885
44848-7	4.84	0.191	4.851/4.826	0.1850/0.1900
44848-8	4.88	0.192	4.890/4.864	0.1910/0.1915
44848-9	4.91	0.194	4.928/4.902	0.1940/0.1930
44848-10	4.95	0.195	4.966/4.940	0.1955/0.1945
44848-11	4.99	0.197	5.004/4.978	0.1970/0.1960
44848-12	5.03	0.198	5.042/5.017	0.1985/0.1975
44848-13	5.07	0.200	5.085/5.055	0.2000/0.1990
44848-14	5.11	0.201	5.118/5.093	0.2015/0.2005
44848-15	5.14	0.203	5.156/5.131	0.2030/0.2020
44848-16*	5.18	0.204	5.494/5.169	0.2045/0.2035
44848-17	5.22	0.205	5.232/5.207	0.2006/0.2050
44848-18*	5.26	0.207	5.271/5.245	0.2075/0.2065
44848-20*	5.33	0.210	5.347/5.321	0.2105/0.2095
44848-21	5.37	0.211	5.385/5.359	0.2120/0.2110
44848-22*	5.41	0.213	5.423/5.398	0.2135/0.2125
44848-23	5.45	0.215	5.461/5.436	0.2150/0.2140
44848-24*	5.41	0.216	5.499/5.474	0.2165/0.2155
44848-25	5.57	0.218	5.537/5.512	0.2180/0.1170
44848-26*	5.51	0.219	5.575/5.550	0.2195/0.2185
44848-27	5.67	0.221	5.613/5.588	0.2210/0.1200
44848-28*	5.61	0.222	5.652/5.626	0.2225/0.2215
44848-29	5.67	0.224	5.690/5.664	0.2240/0.1230
44848-30*	5.71	0.225	5.728/5.702	0.2255/0.2245
44848-31	5.77	0.227	5.766/5.740	0.2270/0.1260
44848-32*	5.71	0.228	5.804/5.779	0.2285/0.2275
44848-33	5.87	0.230	5.842/5.817	0.2300/0.1290
44848-34*	5.81	0.231	5.880/5.855	0.2315/0.2305
44848-35	5.97	0.233	5.918/5.893	0.2330/0.1320
44848-36*	5.91	0.234	5.956/5.931	0.2345/0.2335
44848-37	5.97	0.235	5.994/5.969	0.2360/0.1350
44848-38*	6.01	0.237	6.033/6.007	0.2375/0.2365
44848-39	6.01	0.238	6.071/6.045	0.2395/0.2385
44848-40*	6.11	0.240	6.109/6.083	0.2405/0.2395
44848-41	6.13	0.241	6.147/6.121	0.2420/0.2410

* Included in Kit 701133X